



# 390-450nm OPTICAL ISOLATORS

www.isowave.com  
64 Harding Avenue  
Dover NJ 07801  
Phone 973-328-7000  
Fax 973-328-7036  
sales@isowave.com

## DESCRIPTION

ISOWAVE offers a wide variety of isolators for the 390-450nm wavelength band. Features to choose from include 2mm and 5mm clear apertures, fixed or tunable polarizers and two power level options\*. A Faraday rotator with no polarizers is also available.

\*Medium – Glan Taylor Polarizer (no escape ports)  
\*High – Glan Taylor Polarizer with dual escape ports

## FEATURES

- Wide Tuning Range
- Mounting Collar Included
  - High Isolation
  - Low Insertion Loss

MODEL NUMBER	Clear Aperture	Tunable	Broad-band	Isolation Minimum / Typical	Ins Loss Typical / Maximum	Transmission Minimum / Typical	Power Handling	Diameter	Length
	mm	Yes/No	Yes/No	dB	dB	%	W/cm2	inch / mm	inch/mm
I-40-2-FR	2	N	N	30 / 35	0.5	89	300	1.0 / 25.4	1.0 / 25.4
I-40-2M	2	N	N	35 / 40	0.6 / 0.8	83 / 86	100	1.0 / 25.4	3.54 / 90
I-40-2H	2	N	N	35 / 40	0.6 / 0.8	83 / 86	250	1.0 / 25.4	4.13 / 105
I-40-5-FR	5	N	N	30 / 35	0.5	89	300	1.375 / 34.9	3.07 / 78
I-40T-5M	5	Y	N	35 / 40	0.6 / 0.8	83 / 86	100	1.375 / 34.9	4.12 / 105
I-40T-5H	5	Y	N	35 / 40	0.6 / 0.8	83 / 86	250	1.375 / 34.9	5.01 / 127
I-40-SD-M	5	Y	N	50 / 55	1.5 / 2.0	63 / 79	100	1.375 / 34.9	4.12 / 105

### Wavelength Options

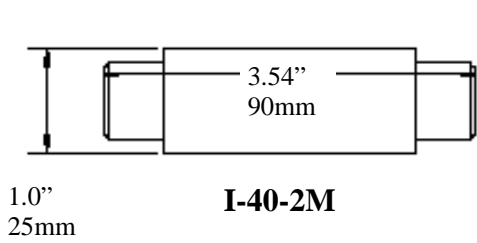
\*All isolators may be ordered centered anywhere between 390 and 440nm. Isowave will optimize on best effort basis using available lasers, or customer may supply laser for alignment and testing.

\*See page 3 for typical performance curves, or ask Sales for an isolation curve based on your preferred center wavelength

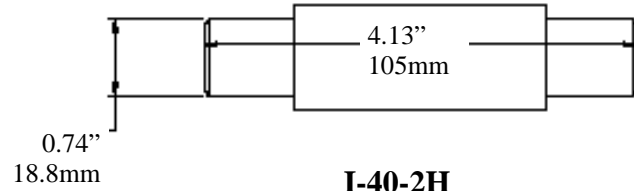
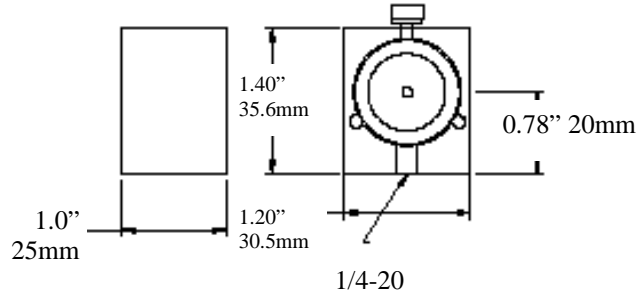
### Part Number Options

FR = Faraday Rotator (45 +/-3 degrees rotation, no polarizers)  
M, H = Polarizer Power Level Options: Medium High  
T = Tunable: Input polarizer may be rotated to maximize isolation  
SD = Semi-Double Stage, Tunable

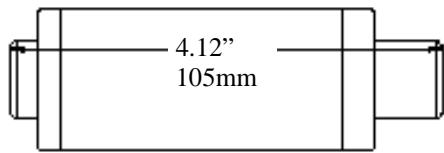
**390-450nm OPTICAL ISOLATORS  
OUTLINE DIMENSIONS**



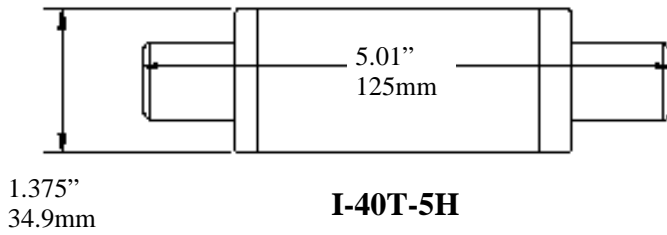
**I-40-2M**



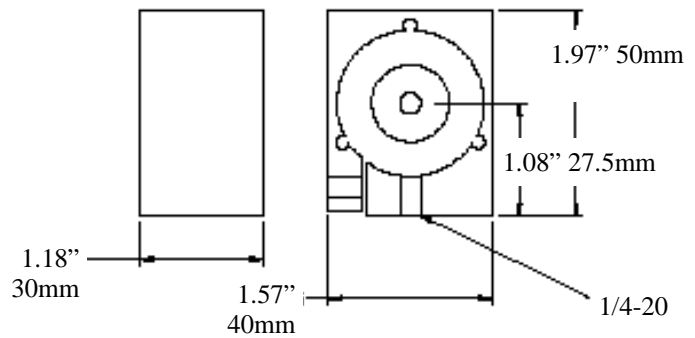
**I-40-2H**



**I-40T-5M  
I-40-SD-M**

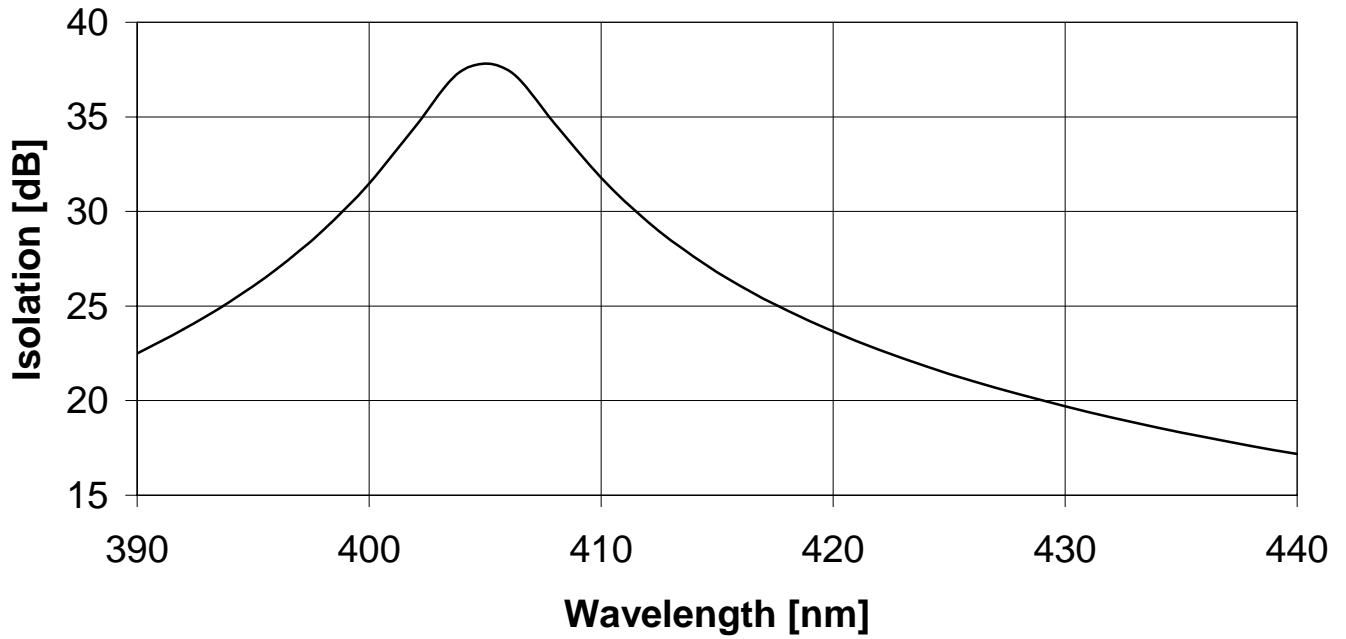


**I-40T-5H**



**www.isowave.com**  
**64 Harding Avenue**  
**Dover NJ 07801**  
**Phone 973-328-7000**  
**Fax 973-328-7036**  
**sales@isowave.com**

### 390-440nm Single Stage Isolator



### 390-440 Semi-Double Stage Isolator

